

**FLYMASTER AVIONICS<sup>®</sup>**

**Using GPSdump with B1nav**

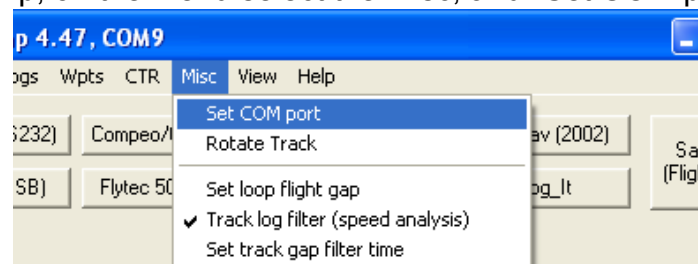


### Connecting B1nav to GPSdump

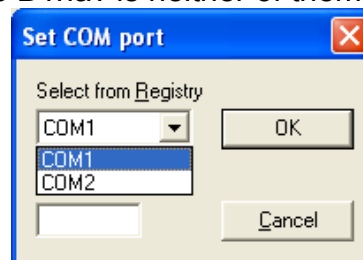
GPSDump uses a virtual com port to connect to the B1nav, so the first step is to discover which port number has been allocated by the PC to the B1nav virtual com port.

The following steps will allow you to easily discover that com port number:

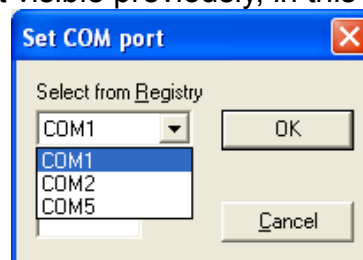
- Disconnect B1nav from your PC
- Start GPSdump, on the menu select the Misc, and "Set COM port".



- Check the available ports, and make a note of them, in this example we only have COM1 and COM2, so the B1nav is neither of them.



- Click the "Cancel".
- Switch on your B1nav, and connect it to your PC.
- Wait a few seconds.
- Go into the "Misc" "Set COM port" again. Check the available ports. You should see a new port which was not visible previously, in this example we now have COM5.





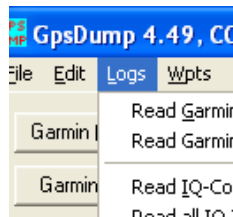
- Select the respective COM port, in the example we I will select COM5 (this is the COM port allocated to the B1nav), and click OK.
- You should now be able to upload and download data from your B1nav.



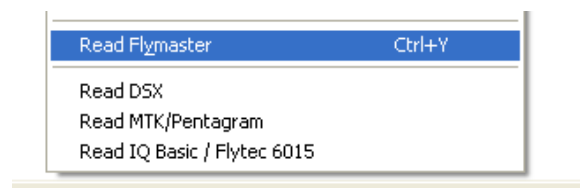
### Downloading flight data from B1nav

Once you have selected the correct port as described above, to get data from the B1nav take the following steps.

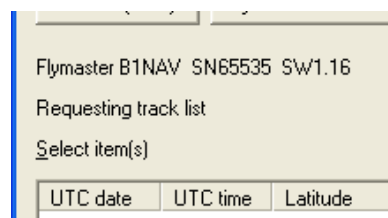
- Make sure the B1nav switched on and is connected to the PC.
- Startup GPSdump, on the menu select “Logs”



- Locate the and click on the “Read Flymaster” option in the menu.

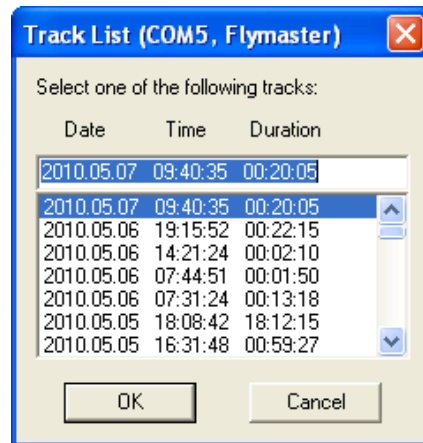


- GPSdump will request the stored flights from B1nav this may take a few seconds

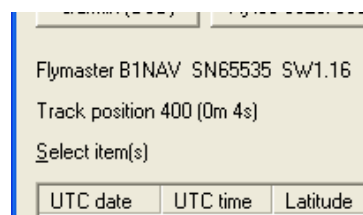




- Once GPSdump has the list of available flights in the B1nav it will show a “Track list” dialog, select the flight to download and click “Ok”.

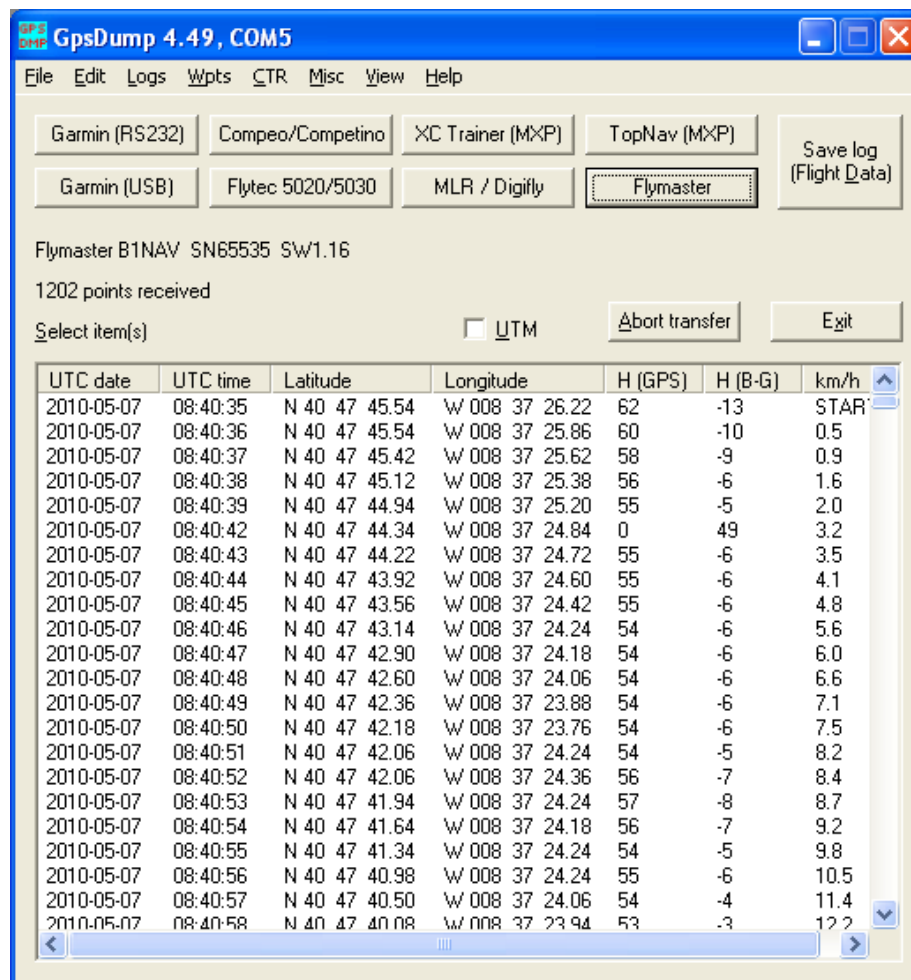


- GPSdump will start to download the flight data, you will see the “Track position” counter incrementing, and a forecasted time remaining will appear in brackets next to the counter.

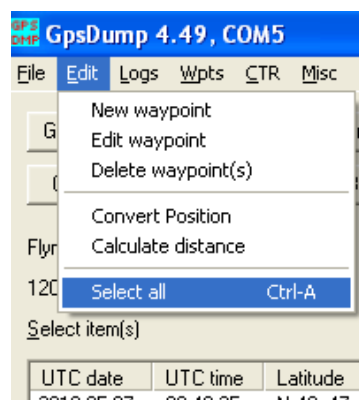




- Once the flight is downloaded GPSDump will display the list “track position records”

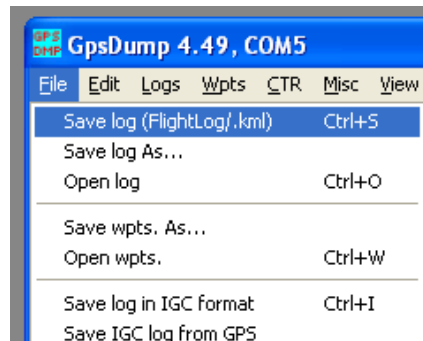


- You must select the track position records you wish to save, to select all the entire flight select the “Select all” option in the “Edit” menu

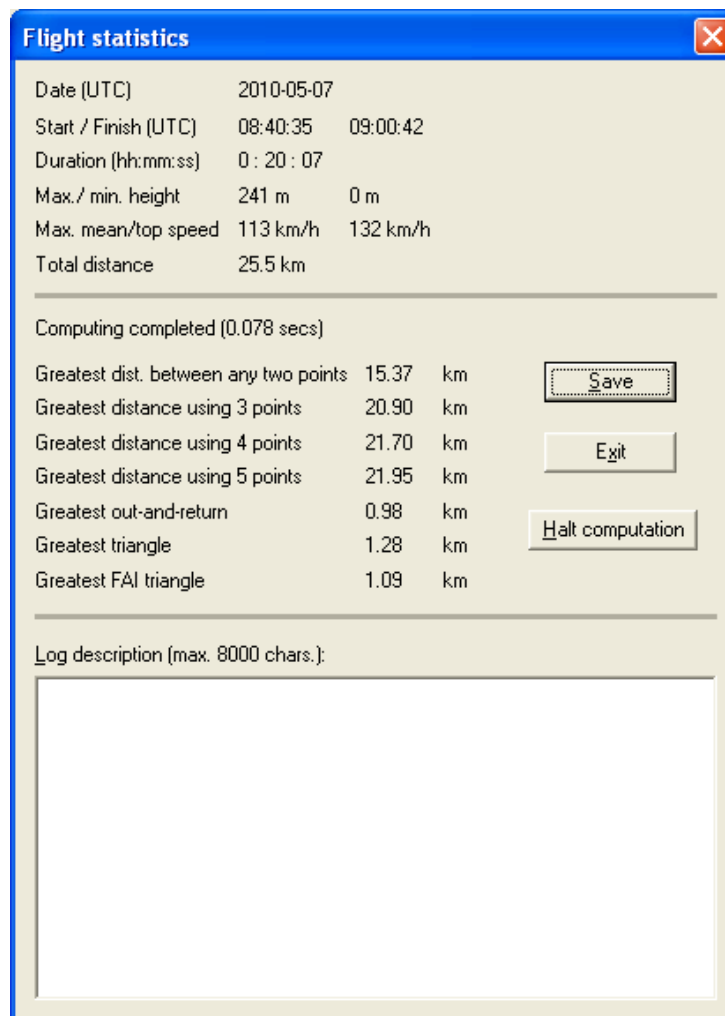




- Having selected the “track records”, open the “File”->”Save log (FlightLog/.kml)” this will calculate the flight statistics and prepare for saving the track log to disk.



- Once the “Flight statistics” have been computed, click the “Save” button to save the track log to disk.





- Once the flight is save it may be viewed using “Google Earth” or uploaded to the XCLeonardo system.